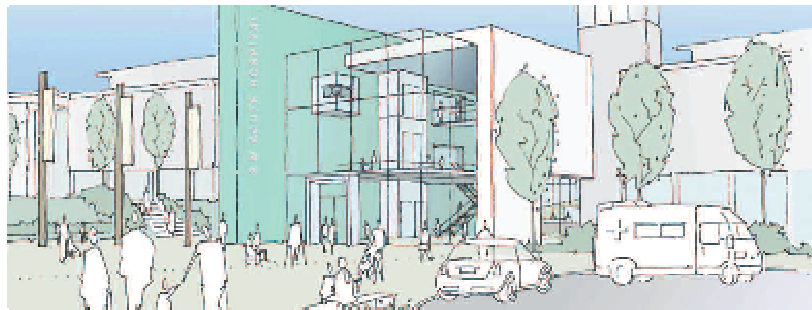


Omagh Hospital Complex

Positioning the New Service Model



Dr. Diana Cody

Medical Director



developing
better
services



OMAGH HOSPITAL COMPLEX

Background

- Sperrin Lakeland Trust is re-configuring services as part of the Developing Better Services reform & modernisation
- The care model is being re-profiled from 2 acute hospitals, to 1 acute and 1 local hospital
- Inpatient mental health services for the adult population of the southwest (incl. Acute) are based in Omagh, and will continue
- This also presents an opportunity to enhance community and primary care provision.

OMAGH HOSPITAL COMPLEX

Project Components

- Redesigning the delivery of local healthcare
- Using a 'local hospital' type model
- Offering appropriate alternatives to hospital admissions
- Integrating hospital, community & primary care services
- Consolidating services at one location
- Facilitating team-working among Health Professionals
- Enhancing the effectiveness of regional and national healthcare networks

OMAGH HOSPITAL COMPLEX Project Components

Key Aim:

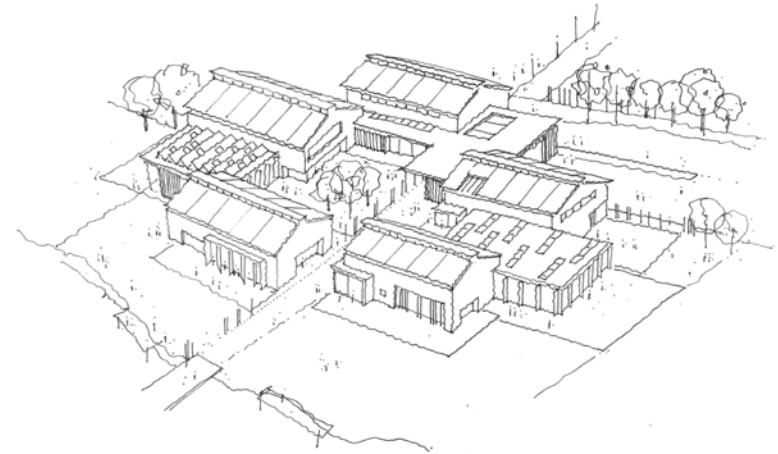
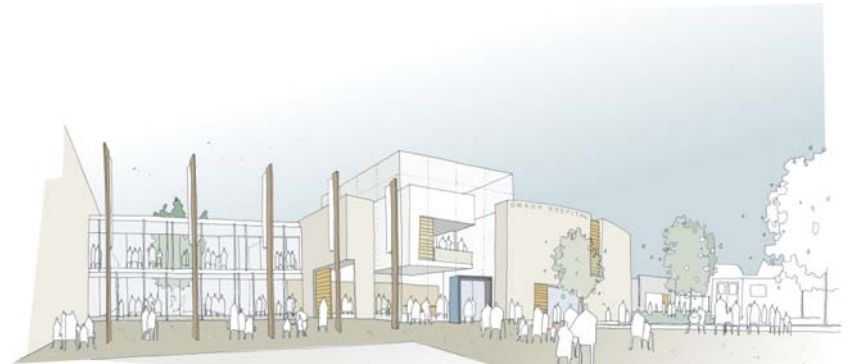
Deliver High Quality,
One Stop Services
as Locally as Possible

OMAGH HOSPITAL COMPLEX

Project Components

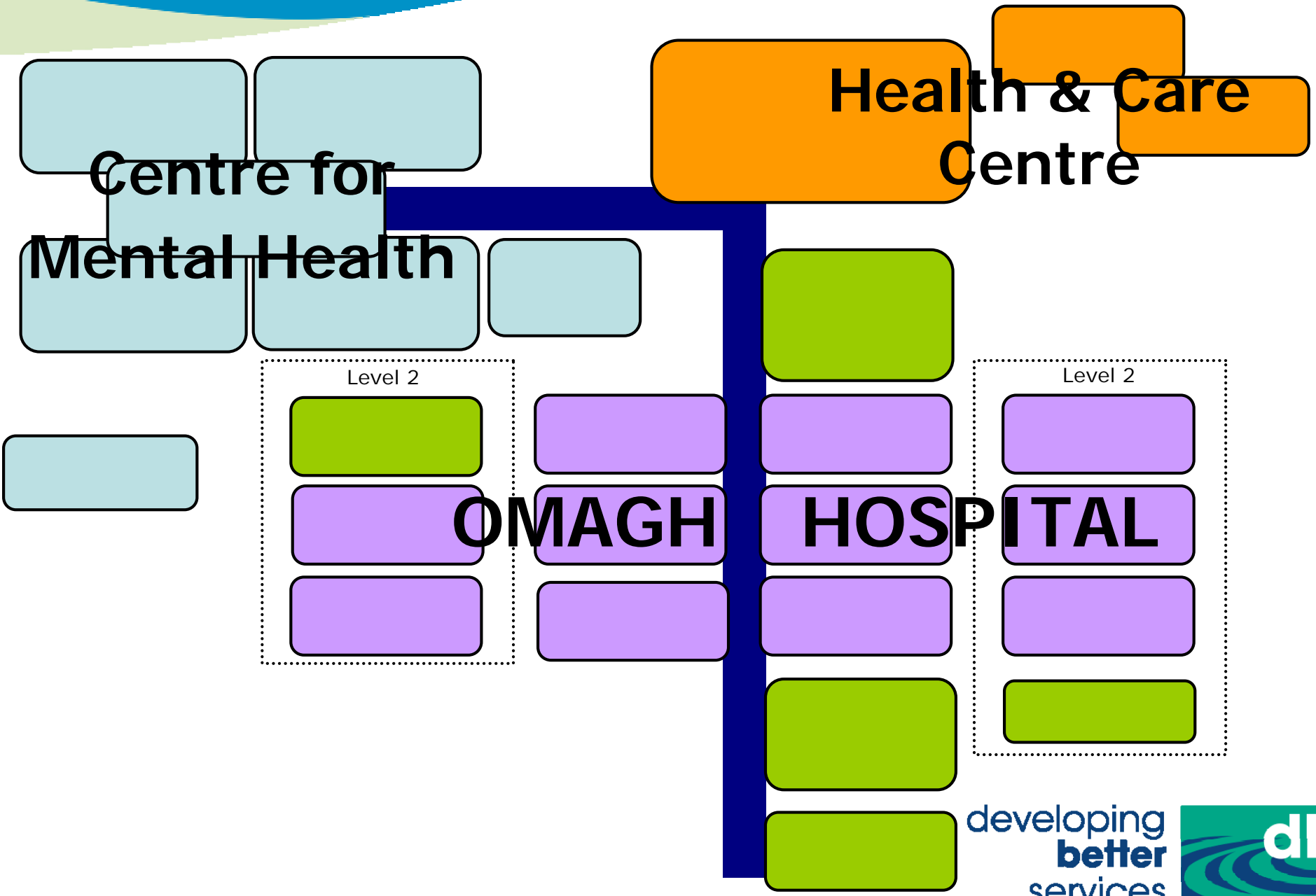
3 Core Components

1. New Omagh Hospital with just over 100 beds
2. Omagh Health & Care Centre with community facilities
3. Centre for Mental Health, with approx 100 beds



Omagh Hospital Complex

PROJECT COMPONENTS



OMAGH HOSPITAL Project Components

3 Key Components of the Omagh Hospital;

1. Emergency Services
2. Ambulatory Care
3. Inpatient Care





Hospital Components

1. Emergency Services

Urgent Care & Treatment Centre	with Emergency Assessment Unit, Mobile Cardiac Unit and GP Out of Hours
Clinical Decisions Unit	Patient observation/ assessment/ treatment
Supported by;	<ul style="list-style-type: none">▪ A&E Managed Clinical Networks▪ Full Imaging Suite▪ Laboratories and Near Patient Testing▪ Emergency Outpatients▪ Electronic records and Telemedicine



Hospital Components

2. Ambulatory Care

Day Surgery Unit	Women's Health Unit
Outpatients Department	Children's Centre
Renal Unit	Mental Health Day Hospital
Clinical Investigations	Imaging / X-ray suite
Allied Health Professionals (Therapy Suite)	



Hospital Components

3. Inpatient Care

General Medical Ward (Adult)

Treating those with non-life threatening conditions and transfers from acute/specialist hospitals.

Intermediate Care Ward

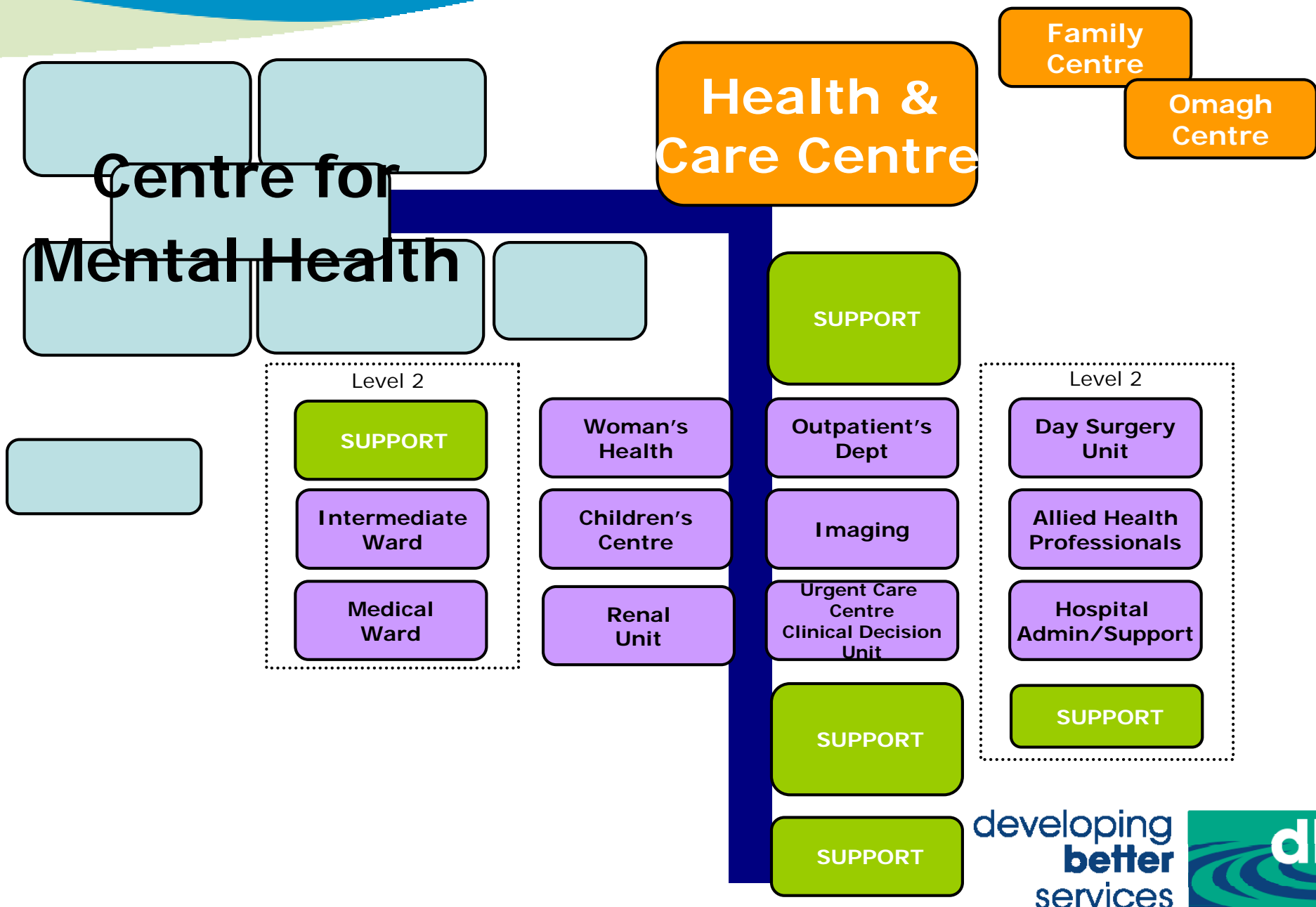
Rehabilitation or stepping up from Community Care.

Mental Health Inpatient Wards

Dr Dominic Connolly presenting details.

Omagh Hospital Complex

PROJECT COMPONENTS



Omagh Health & Care Centre Vision

Will enable health professionals from;

- **many** disciplines to offer
- an **increased** level of support
- to patients being cared for in **hospital**, in the **community** or in their own **homes**.

The Centre will incorporate facilities for;

- examination,
- treatment,
- assessment and
- administrative bases.

Omagh Health & Care Centre Services

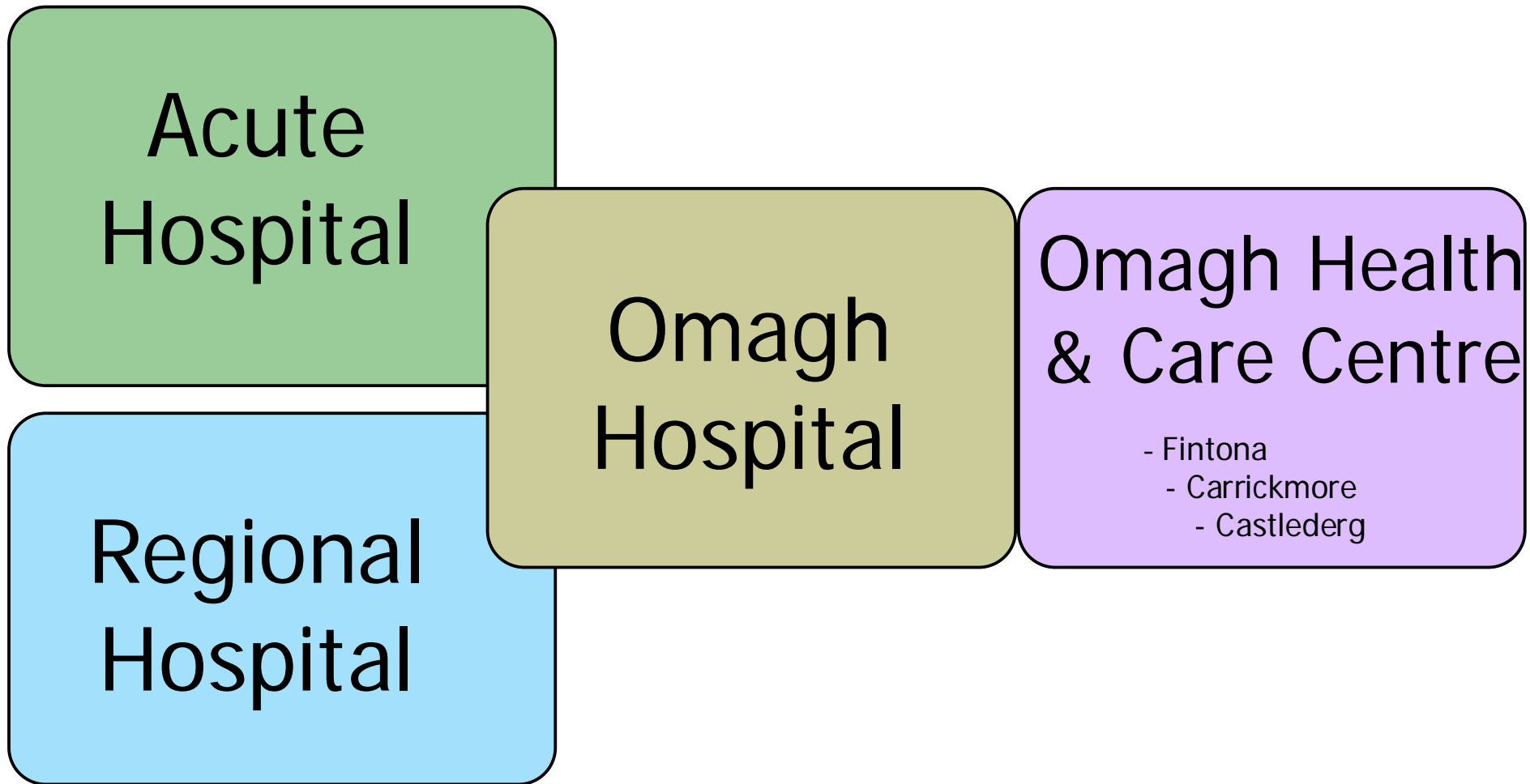
Health Visiting, Specialist Nursing, Health Promotion;
District Nursing and School Nursing

Social Work Teams;
Health & Disability, Elderly Care, Mental Health and Family & Childcare

Dental and Podiatry

Community Facilities;
Omagh Centre for Learning Disabilities, Family Centre and Omagh
Community Store

New Service Model The Network



New Service Model Fundamentals

- Fundamental redesign of care delivery
- Moving to truly multi-disciplinary team working
- Seamless transition between care settings
- Health & Care Centres = focal point for care coordination/planning
- Establishing 24/7 central, urgent response service
- Proactively targeting vulnerable/at risk individuals
- Maintaining those with long-term conditions in the community.

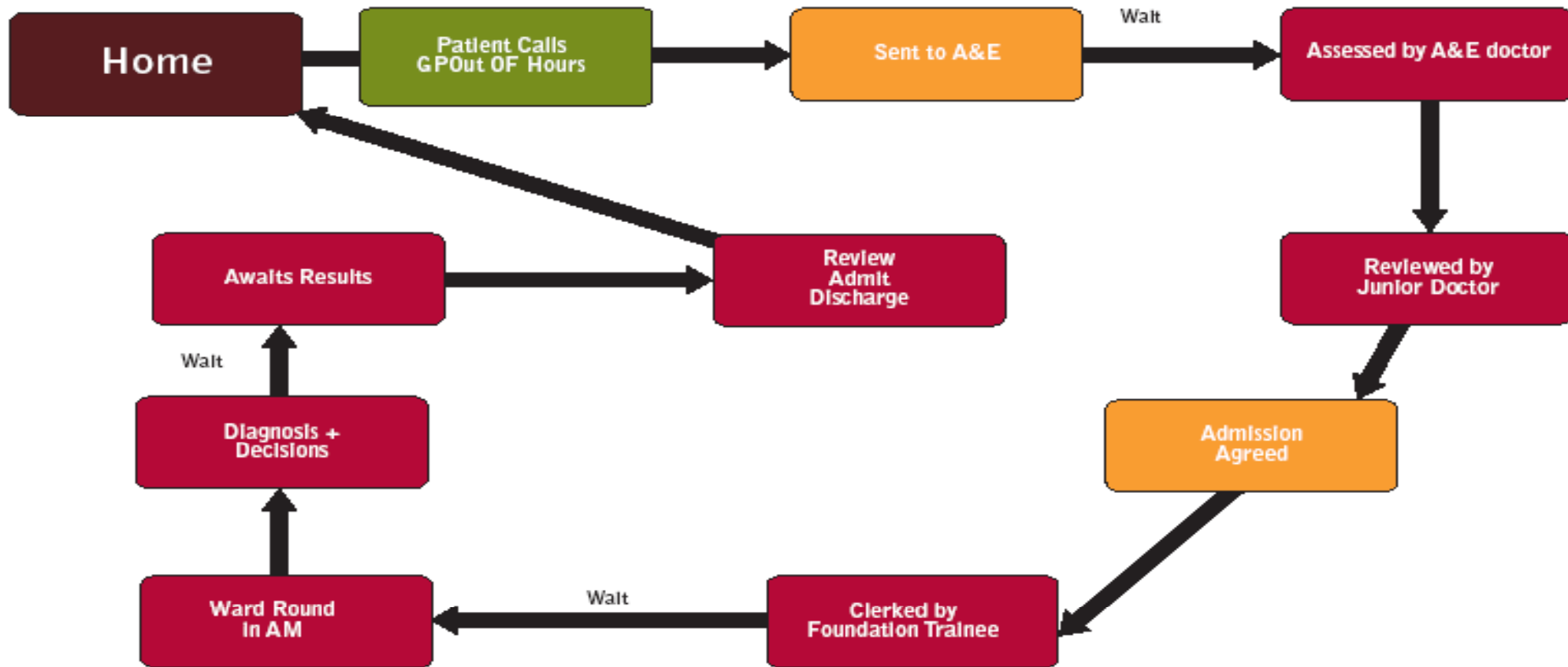
New Service Model Benefits

Better access to a wider range of services,
fewer trips to hospital and reduced waiting times.

- Faster Diagnostics & Treatment
- Modern Technologies and Ways of Working
- Strengthened Skilled Workforce
- Rapid Access to Senior Opinion
- One Stop Services
- Improved bed usage and managed admissions
- Improved quality of acute care.
- Provide alternatives to acute hospital care/appropriate admissions

The Patient Journey Current

Patient Journey - Current ● ● ●



The Patient Journey Future

Patient Hospital Journey - Future ● ● ●

