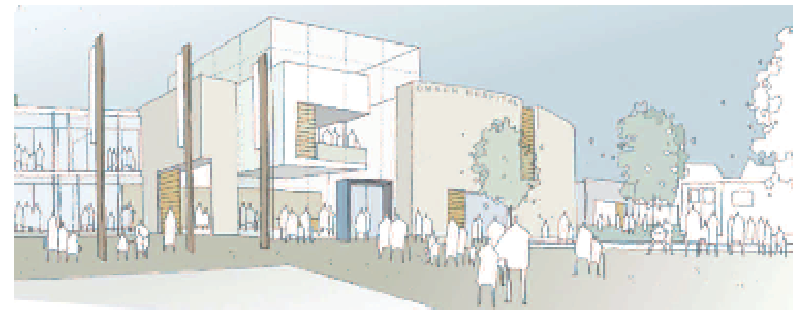
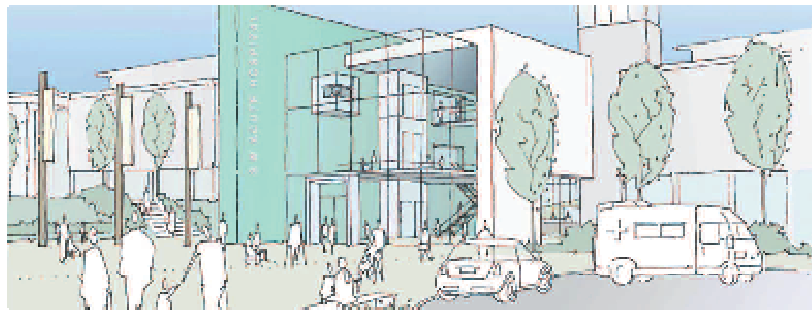


Mr Colm McCauley,

Senior Responsible Owner, New Hospitals Projects

Director of Finance , Sperrin Lakeland Trust



Omagh Hospital Complex



Senior Responsible Owner

Responsible For:

- Securing the Investment
- Ensuring Strategic Fit
- Achieving Objectives & Targets (on time, within resources)
- Forming Effective Project Partnerships
- Stakeholder Liaison and Communication (DHSSPS/SIB/WHSSB)
- Ensuring a Progressive Organisational Structure
- Project Reviews and Evaluation

Outline of Presentation

- Overview of Sperrin Lakeland Trust
- New Hospitals for the South West (NI) Project Structure
- Sperrin Lakeland Trust: Financial Overview
- Review of Public Administration: New Western Trust
- Omagh Hospital Complex: Capital Costs
- Conclusions

Sperrin Lakeland Health & Social Care Trust

- Trust Established on 1st April 1996
- Trust area covers 3 District Council Areas (Omagh, Fermanagh and about 1/3 Strabane)
- 1,000 square miles of rural Northern Ireland
- Main Local Employer with 5,500 staff (incl. Bank staff)
- Provides a full range of Health & Social Services to approx. 120,000 people;

Acute Services, Family & Childcare, Mental Health, Services for Older People, Services for those with disabilities, Primary & Community Services, Health Promotion.



Trust Management Structure

Sperrin Lakeland Trust Board

CHAIRMAN

5 x Executive Directors

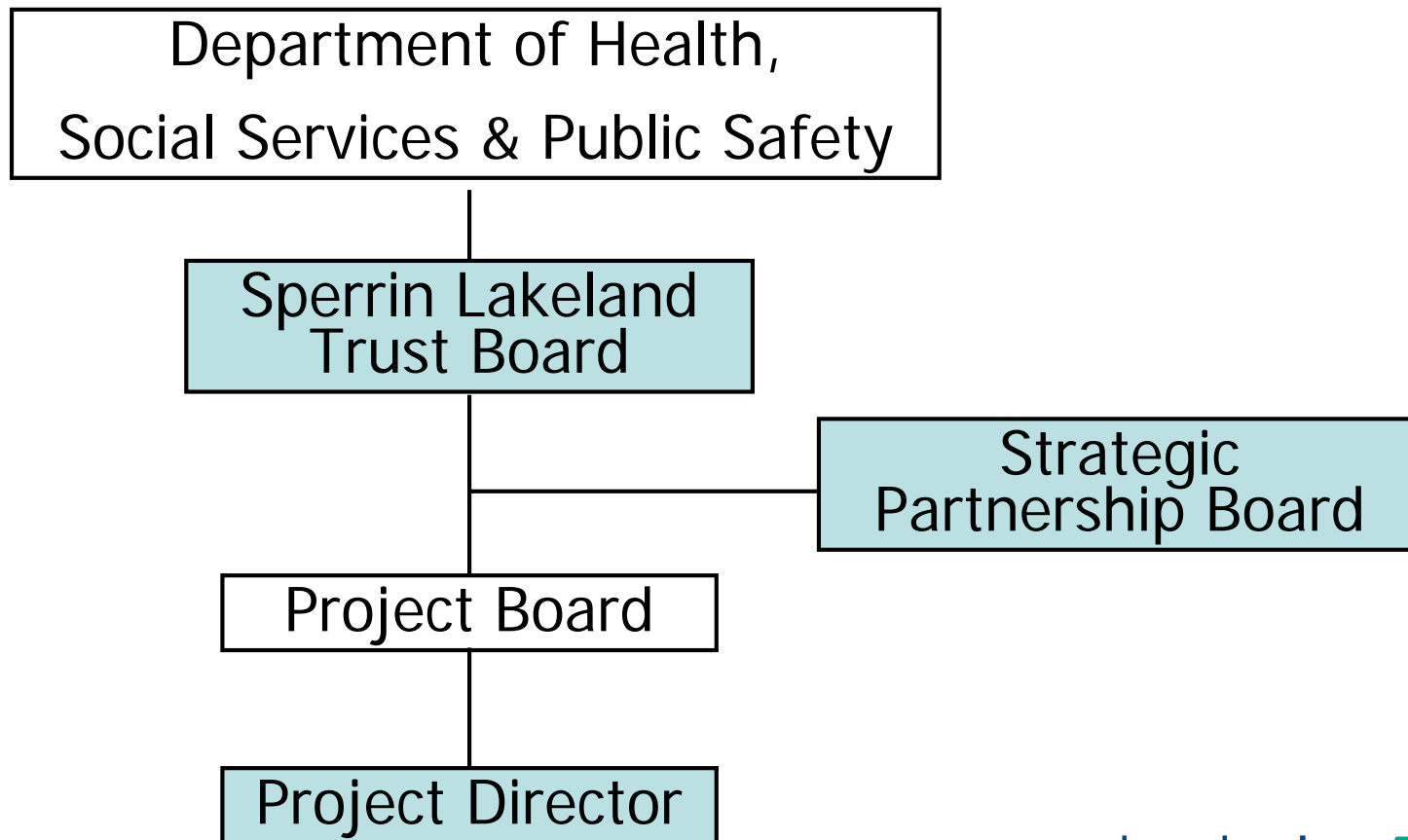
5 x Non-Executive Directors

6 x Non-Voting Directors

developing
better
services

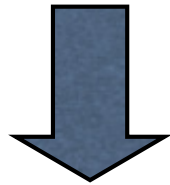


New Hospitals for South West Project Structure

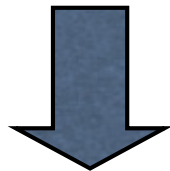


New Hospitals for South West Project Structure

**Chief Executive
Officer**



**Senior Responsible
Owner**



Project Director

Strategic Partners

Corporate Partners

Project Partners

Income and Expenditure

Year End 31st March 2006

	2004/05 £m approx	2005/06 £m approx
Income	140	154
Expenditure	140	154
Deficit	(0)	(0)

Expenditure Analysis

2005/06

Application	£m approx	%
Payroll	85	55.2
Purchase of Care (Non HPSS)	20	13.0
Personal Social Services	12	7.8
Recharges – Other HPSS	7	4.5
Other (non-pay costs)	30	19.5
TOTAL	154m	100.0

Trust Staff

Number of Staff, June 2006

Staff Group	Employee Numbers
Medical and Dental	181
Nursing and Midwifery	2722
Professions Allied to Medicine, Other Professional & Technical	320
Ancillaries	1335
Administration and Clerical	586
Social Services	415
TOTAL	5,559

Balance Sheet

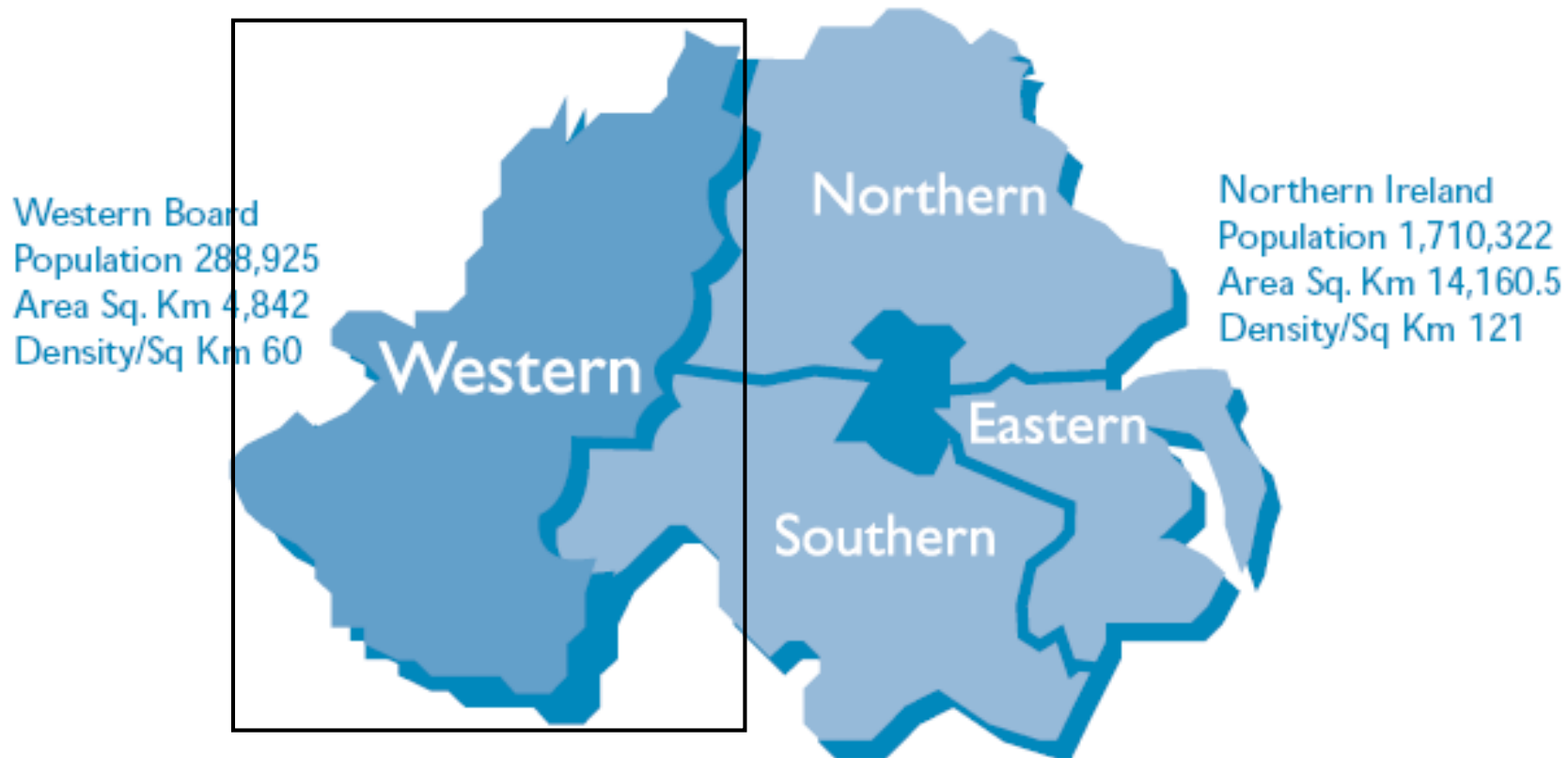
at 31st March 2006

	2004/5 £m approx	2005/6 £m approx
Fixed Assets	91	97
Net Current Assets (Liabilities)	(0)	(4)
Long Term Liabilities	(17)	(17)
Total Assets Employed	74	76
Financed By: Total Capital and Reserves	74	76

Review of Public Administration (RPA)

- Government Review of Public Administration (NI),
- 18 Existing Trusts Replaced with 5 Integrated Trusts
- Sperrin Lakeland integrated into Western Trust;
 - Sperrin Lakeland HSS Trust (Integrated)
 - Altnagelvin HSS Trust (Acute)
 - Foyle HSS Trust (Community)
- New Trust Responsible for;
 - New Hospitals for South West of Northern Ireland Projects
 - New Configuration operational 1 April 07 (shadow period 06)

New Western Trust



developing
better
services



New Western Trust

- 3 Existing Trusts established on 1st April 1996
- Unqualified Audit Opinion for 3 Trusts for each year
- **No** adverse audit opinion regarding financial stability
- Western Area Director of Finance Forum
- Established consistency of policy and practice across 3 Trusts (monitored by WHSSB and DHSSPS)

New Western Trust

Combined Income & Expenditure Account 2005-2006

	Sperrin £m approx	Foyle £m approx	Altnagelvin £m approx	Total £m approx
Income	154	119	106	379
Expenditure	(154)	(119)	(106)	(379)
Surplus/(Deficit)	0	0	0	0

Omagh Hospital Complex Project Capital Costs

Project Item	£ Cost (Approx)
Construction Costs	108.6m
Fees: Pre-Contract	9.9m
Fees: Post-Contract	6.5m
Non-works Costs	5m
Equipment	8m
Contingency	9m
Other Capital	2.7m
Total	150m

developing
better
services



Conclusions

- Sperrin Lakeland Trust: Financially Stable Position
- Ease of Transition into Western Trust
Review of Public Administration, no adverse effect on project
- Experienced Financial Team supported by Financial Advisors
- Confidence in Robustness of Project Financial Analysis

Compatible Partners

- Maximise opportunities presented by Competitive Dialogue Process
- Demonstrate Value for Money
- Illustrate innovation within financial envelope

Leading to mutually beneficial relationship