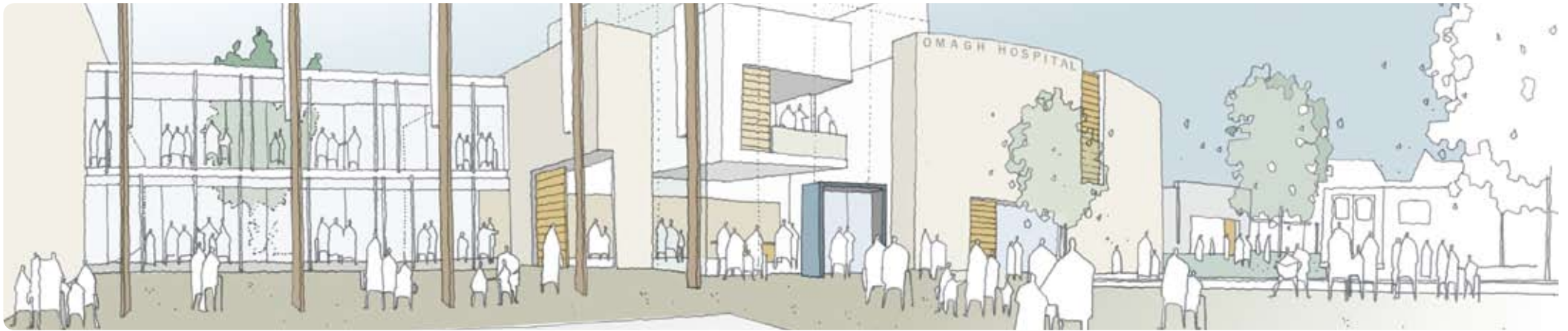


Omagh Hospital Complex

Project Information



Developing Better Services



Project Information

Sample Massing For the Omagh Hospital Complex: May 2006



The exemplar design concept shows the massing of the new Hospital Complex. The new facilities are shown to the left of the existing listed Tyrone & Fermanagh Hospital building. The massing is estimated at 45,000 m².

Key to the design is the integration of the hospital, mental health and primary care facilities within the site, with buildings linked via the hospital street. Inpatient facilities in both the Omagh Hospital and Centre for Mental Health will maximise the therapeutic views overlooking the scenic Camowen River. Sections of the site requiring sensitive treatment include the hospital graveyard and the Chapel where the dignity of these areas will be maintained.

The Service Model

The Omagh Hospital Complex is redesigning the delivery of local healthcare presenting an innovative model that brings primary, community and intermediate care services together on one site with networks to acute services.

The new Complex is expected to have around 200 beds in total, with just over 100 beds in the new **Omagh Hospital** providing urgent care and treatment, inpatient care, renal dialysis, day surgery and a wide range of diagnostics and outpatient services.

A state of the art **Centre for Mental Health** designed to create a holistic healing environment, will lead to the modernisation and enhancement of current practice and services. With approximately 100 beds, the mental health facilities will provide acute mental health provision for the south west of Northern Ireland.

Omagh Health & Care Centre will enable primary care staff to offer an increased level of support to patients and provide more care to patients away from a hospital setting and in their own homes. The Centre will be the focal point for multi-disciplinary team working and integrate primary care staff with hospital and community health professionals.



Proposed Portfolio of Services: Omagh Hospital Complex

Hospital Components

An **Urgent Care Centre** operating a 24-hour Emergency Assessment Unit and dealing with patients who need emergency treatment. This includes patients brought by ambulance, except those who are seriously ill, who will be diverted or transferred immediately to the nearest Acute Hospital. Practitioners specially trained in life-saving, emergency treatments will staff the Centre, which will have a dedicated resuscitation area. The latest technology and new techniques will help to diagnose patients faster. New technology will also allow the Centre to link with specialists in other hospitals. The Emergency Service will include minor injuries and medical assessment areas, with a separate area for children. The Centre will also accommodate GP 'Out of Hours'.

A **Clinical Decisions Service** will be provided on a 24-hour basis to patients requiring emergency treatment. This service will work in conjunction with the Urgent Care & Treatment Centre and will involve intensive monitoring, treatment, investigations & diagnosis.

Inpatient wards will be provided offering intermediate, intensive rehabilitation and palliative care services. These wards will provide care for patients referred from a primary or community care setting or who need further rehabilitation and help to move back home following a stay in an acute hospital. This will include patients requiring post surgical rehab, those with complicated fractures, recovering from strokes,

heart conditions or other illnesses. Specialist nurses and Allied Health Professionals will provide a key element of care, supported by consultants.

A **Day Surgery Unit**. Improved surgical techniques will mean that more surgery can be offered as day cases, shortening waiting times and reducing the need for overnight hospital beds. The Day Surgery Unit will provide general surgical procedures in Ear, Nose and Throat cases, dental, oral, urology, gynaecology and endoscopy investigations and procedures. There will also be a dedicated children's area.

Imaging (X-Ray) & Diagnostics. Improved access to high quality diagnostic services will result in shorter waiting times for patients to get test results. Ultrasound, Multi-slice CT, Fluoroscopy, mammography and Bone Density Scanning will be provided.

Clinical Investigations with services including heart investigations and lung function testing.

General Outpatients. Future services will see more outpatients procedures performed. Specialist clinics such as ENT, Dermatology, Diabetes and Ophthalmology will be offered. A new computer system will allow GPs to book patients directly for appointments.

The **Children's Centre** is designed around a one-stop-shop approach for children and young people and includes outpatients, ambulatory care and child

development. Fully integrated multi-disciplinary teams include nurses, paediatricians, social workers, play therapists, and Allied Health Professionals.

A **Renal Dialysis Unit** providing haemodialysis with stations operating six days per week.

A dedicated **Women's Health Unit** providing outpatient and day assessment.

Allied Health Professionals including Occupational Therapy, Dietetics, Speech and Language therapy and Podiatry.

Long Term Condition Ambulatory Unit Specialist unit operating as a Day Hospital caring for people with chronic medical illnesses.

A new **Education Suite** will support staff, create a centre of excellence and promote life long and multidisciplinary learning.

An **Ambulance Base** will also be provided on the site of the new Omagh Hospital Complex.

Other hospital services will include social services, pharmacy, facilities for the deceased, medical records, speciality teams, catering, estates and facilities management. The complex will also include a sterile services centre for the South west and keyworker accommodation.

Proposed Portfolio of Services: Omagh Hospital Complex

Centre for Mental Health

The new purpose built 100 bed Centre for Mental Health will enable the delivery of advanced methods of treatment to both in-patients and out-patients. The facilities will provide a homely setting with single room accommodation for patients and will include;

Acute Adult Mental Health Unit. New, purpose built facilities with separate male and female accommodation will be provided to deliver high quality treatment for patients who are at risk in the community due to acute mental illnesses.

Psychiatric Intensive Care. Care will be extended to provide for patients requiring more intensive support in a safe environment.

Acute Mental Health Ward for Older People.

Separate facilities will be provided for older people suffering from acute mental illnesses. The design will take account of the special requirements of these client groups.

Challenging Behaviour Under 65. This will be an in-patient facility for adults with serious mental illnesses who display challenging behaviours. The layout will be designed with safety in mind, with facilities for therapy and family visiting.

Challenging Behaviour Over 65. This facility will provide a safe and secure environment for older people with long-term mental illnesses and those suffering from dementia. Care and treatments will be provided to ease symptoms such as severe agitation and restlessness.

The Addiction Treatment Unit will treat those with alcohol and drug dependencies. This includes facilities for in-patients providing therapeutic programmes and detoxification and a base for community services. Treatment and support will be offered to patients in the community, including detoxification in their own homes.

Psychosexual Services. This unit will be main administration base for a comprehensive range of psychosexual services delivered across the Western Board Area. These will include services for survivors of sex abuse, people with sexual dysfunction and those being treated for inappropriate behaviours.

Mental Health Day Hospital. The Day Hospital will provide specialist day care, which will play a key role in rehabilitation of in-patients and provide enhanced supervision and support to clients in the community, thus decreasing the need for hospitalisation.

Omagh Health & Care Centre

The range of services which will operate from the Health and Care Centre will include;

HEALTH & CARE CENTRE SERVICES

District Nursing Services
Health Visiting Services
School Nurses
Community Dental Services
Health and Disability Teams
Allied Health Professionals
Family & Child Care Social Work Teams
Older People Care Teams
Community Mental Health
Also On Site:
Omagh Centre for Learning Disabilities
Family Centre

Specialist community staff will also be based within the Centre. These specialists will provide a service to patients in the Omagh Hospital and clients in the wider community. There will also be accommodation for voluntary groups who wish to liaise with staff on behalf of the local community. In addition, new day care facilities for those with learning disabilities and a new family centre for the Omagh area will be provided. A new Community Equipment Storage facility will work alongside the Omagh Hospital and Health & Care Centre to offer a comprehensive service.

Site Preparation Works

A programme of preliminary works designed to prepare the tyrone and fermanagh site for the construction has been developed and includes the following:

Decentralise boiler: the central boiler is being moved from its current location to the main tyrone & fermanagh hospital building.

Demolition of water tower: the existing water tower will be removed and a new water main installed.

Decontamination of water treatment works: the current water treatment area will be decontaminated and a new pumping station installed.

Repairs to rc church: fabric repairs will be carried out on this listed building.

Demolitions: vacant buildings including 'hilltop', the garden centre and wash bay areas within the site plan will be demolished.

Diversion of site services: services including underground cabling, water pipes, sewage pipes, drainage pipes and electrics contained within site plan will be rerouted from the development zone.

Site leveling: site clearance and ground remodelling will be completed.

Asbestos: in-depth asbestos surveys have been completed and a programme for asbestos removal is underway.

Road realignment and new link road: to maximise access to the new hospital complex, the existing donaghanie road will be enhanced and a new link road constructed to the south of the site.

Decant of pine and larch: Pine and larch are hospital wards for care of the older person. Proposals are in place to decant these areas to suitable alternative accommodation.



Project Information

Exemplar Design

Exemplar Design Philosophy

The aim of the exemplar design is to deliver the best possible environment for patients, staff, visitors and management while remaining within an appropriate cost envelope. To achieve this, a number of core guiding principles have been established as follows;

A healthy working and healing environment will be promoted. Departments will be logically positioned and easy to access with good communication flows minimising travel distances, expansive use of natural light and access to the outdoors. The design will also optimise the control of infection.

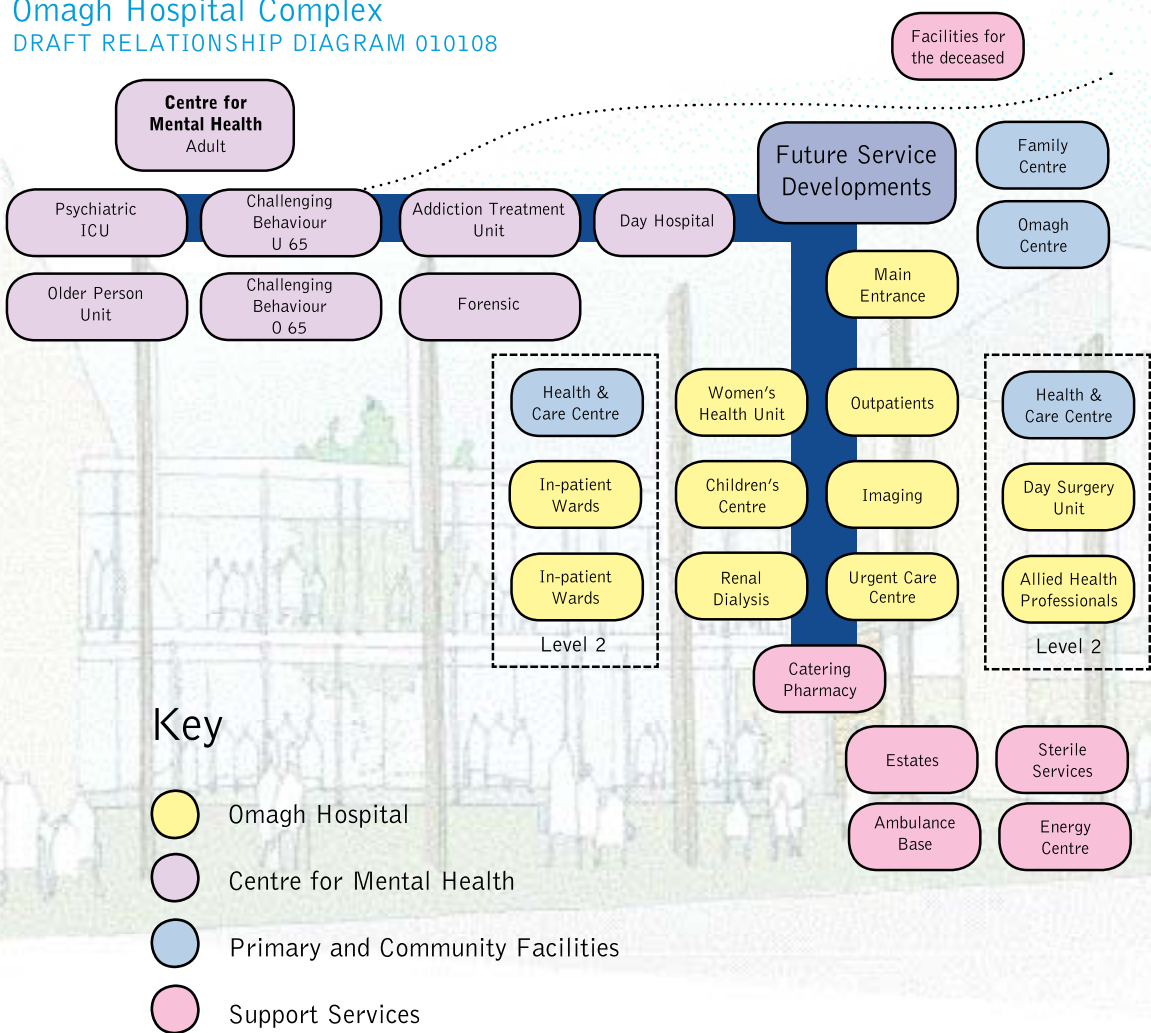
Patient Privacy, Dignity and Comfort will be maximised. In-patient facilities will be provided to the highest standards with therapeutic views, access to natural light and ventilation with patients provided a level of control over their own environment. A large percentage of in-patient beds will be in single room accommodation.

Modern Technologies will be availed of. As well as new ICT and clinical equipment, nurse call systems, automated ordering and advanced security systems will be provided.

Flexibility in Design will be provided. The facilities will be designed to adapt to future needs. Generic rooms suitable for multi-use will be provided with expansion zones identified adjacent to key departments.

Project Information

Omagh Hospital Complex DRAFT RELATIONSHIP DIAGRAM 010108



Project Milestones

Target Date

Advertise for Contractor in the European Journal (OJEU)	2007
DHSSPS Phase 2 Outline Business Case Approval	2007
Receive Pre-Qualification Submissions from interested Bidders	2007
Preliminary Phase & Invitation to Phase 1 Dialogue: Strategic Approach	Spring 2008
Lodge Planning Application for New Link Road	Spring 2008
Outline Planning Application Approval	Spring 2008
Commence Site Preparation Works	Spring 2008
Issue Formal Invitation to Participate in Dialogue (IPID)	Summer 2008
Close Competitive Dialogue	Summer 2009
Receive Final Tenders	Autumn 2009
Appoint Preferred Bidder	Winter 2009/10
Obtain Detailed Planning Permission	Winter 2009/10
Complete Clarification and Fine Tune Project Documentation	Spring 2010
Submit Full Business Case	Spring 2010
Financial Close	Spring 2010
Commence Construction	Spring 2010
Transfers to New Hospital Complex	2012

For Further Information please contact

Mary Maguire

New Hospitals for the South West

The Information Desk
Developing Better Services HQ
Tyrone & Fermanagh Hospital
Omagh
County Tyrone
Northern Ireland
BT79 0NS

Tel: +44(0)28 8283 5891

e-mail: amcconnell@slt.n-i.nhs.uk

Web: www.newhospitals.org

Documents available from the website include:

- Outline Business Case document
- Planning application document
- Project Bulletins



Department of Health, Social Services and Public Safety (DHSSPS);

www.dhsspsni.gov.uk

Health Estates:

www.dhsspsni.gov.uk/index/hea.htm

Strategic Investment Board (SIB) Limited:

www.sibni.org

Western Health and Social Services Board.

www.whssb.n-i.nhs.uk

Purpose of Information Brochure

This information provides an introduction to the Omagh Hospital Complex. The information presented is accurate at the time of printing, but may be subject to change as a result of the Outline Business Case approval process. An update on project developments can be obtained by contacting the Project Information Desk. The Trust cannot accept liability for any inaccuracies contained within this document.