

New Acute Hospital For The South West ENNISKILLEN



Progress Update
No 7
For Works up to 1st May 2010
Provided By
Northern Ireland Health Group

Overview / Current Status



Photo 1 – Aerial Photograph—Site Overview (Taken 19th April)



Photo 2 – Aerial Photograph—Site Overview (Taken 19th April)



Photo 3 – Energy Centre Superstructure Now Complete



Photo 4 – Ward Block Envelope Progressing



Photo 5 – Ward Block Internal Finishes Progressing



Photo 6 – Clinical Block M&E Installations Progressing



Photo 7 – Main Entrance Roundabout works Nearing Completion



Photo 8 – Steelwork Progressing to Ward & Clinical Block Plantrooms

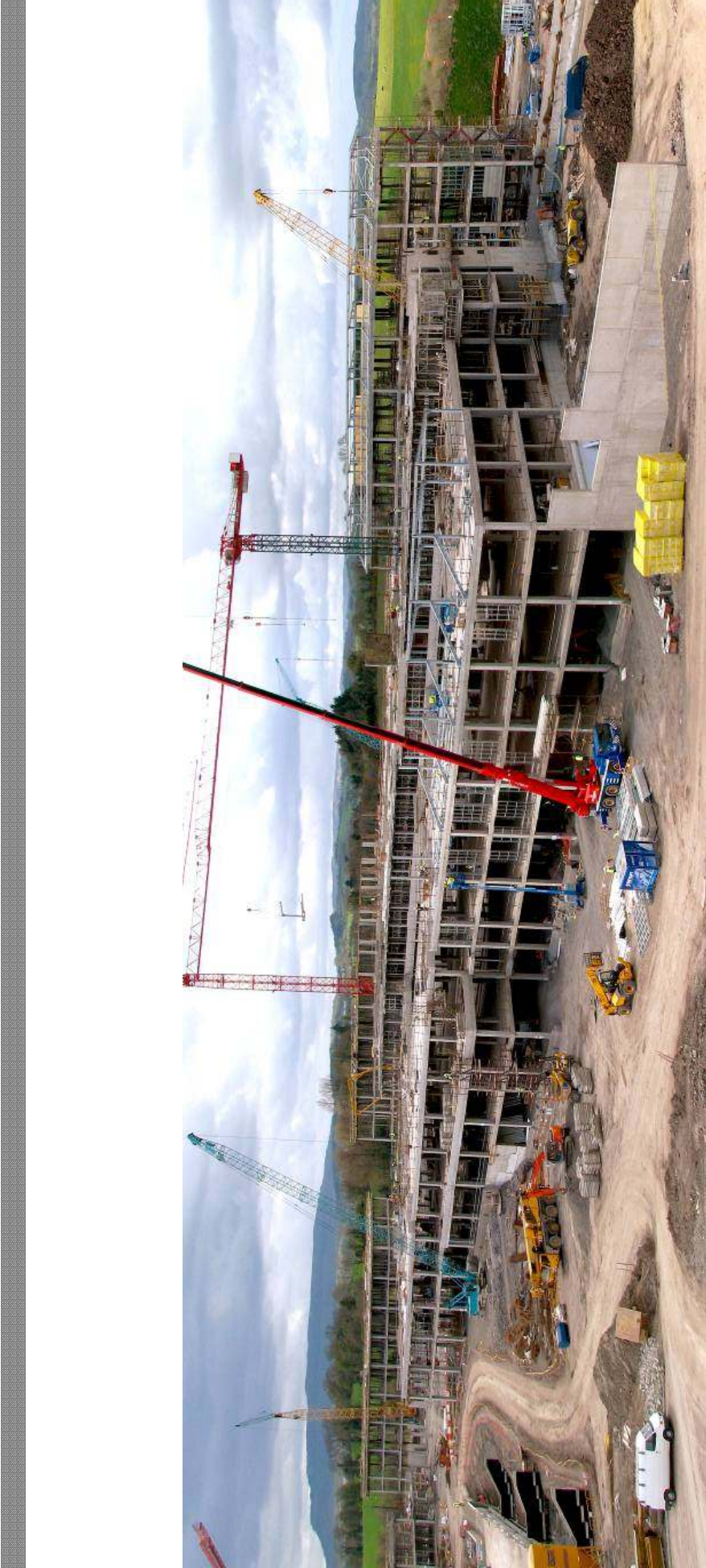


Photo 9 – Overall Superstructure



Photo 10 – Ground Works to South Car Park Progressing

Construction Milestones

Construction Milestone	Detail	Target Date
On Site Start-up	Site Setup; Management & Workers Amenities, Established Site Access Protocols, Piling & Ground Works	May 2009
Mock Up Facility	Viewing of Prototypes of key areas of the new facilities including the single room and en-suite bathrooms	January 2009
Topping Out	Building reach roof top level. Superstructure complete.	Quarter 3 2010
Weather tight	Building sealed from the elements; Windows, doors & roof.	Quarter 1 2011
Internal Finishes	Viewing a section of the completed internal works.	Quarter 1 2011
External Finishes	Landscaping, lighting, signage, way finding.	Quarter 1 2012
Practical Completion	Construction Phase Complete, ready for Trust Commissioning	Quarter 2 2012
Opening	New Hospital opens its doors to patients.	Quarter 3 2012
Official Opening	Official Opening Ceremony.	Autumn 2012

Subcontractor Appointment

- *The project continues to participate in and gain benefit from the supply chain model set up by SERP (Social Economic Regeneration Program). A very compliant and qualified local construction industry is prequalifying for involvement in the project.*

Three Month Look Ahead (May-June-July)

- *The main building frame will be 85% complete*
- *The external envelope will be 30% complete*
- *External in ground services will be 70% complete*
- *The Energy Centre Finishes will be complete, with building services installation underway.*
- *Link bridges 5 & 6 will be complete, 4 will have steelwork stood*
- *The Internal Finishes will be 5% complete.*
- *The Plantrooms will be 15% complete.*
- *The envelope to the two tier car park will be complete.*